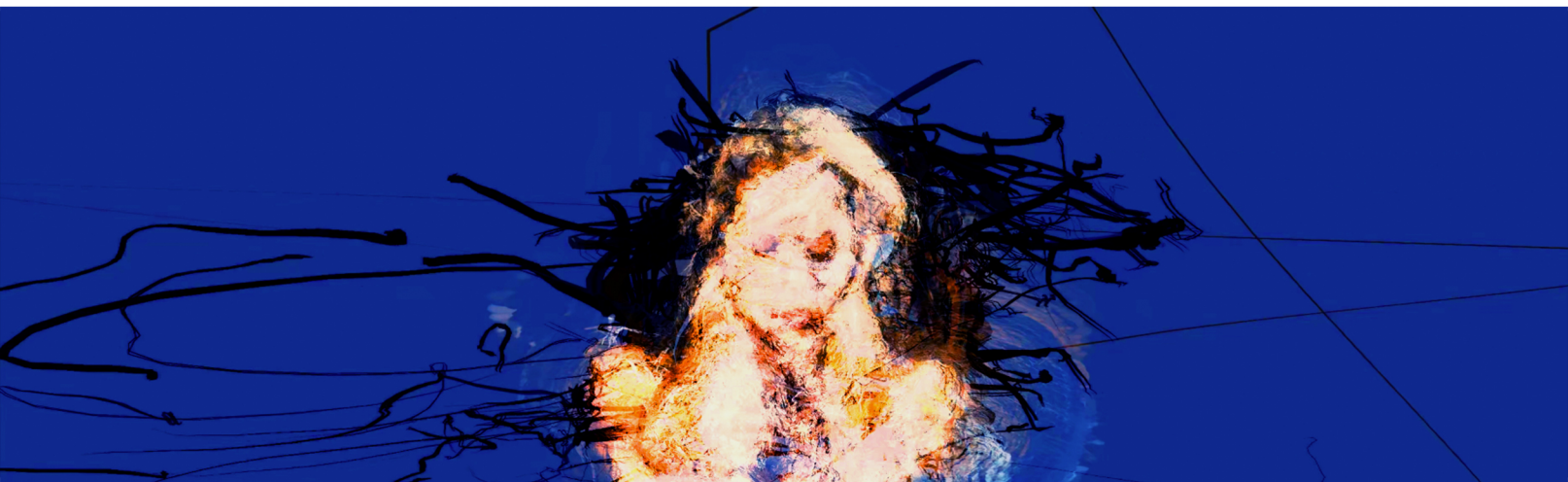


Please see the other side for important event info!

# BreathScape

A live and immersive performance including music, dance, and video projection. BreathScape is a spin-off from the StellarScape project, which explores the human connection to the universe through cycles of star birth and death. In BreathScape, the connection is between our breathing and the breathing of the living planet. The performance is in the Biosphere 2 “lung.” This special semi-underground facility regulates air pressure in the glass enclosure and allows Biosphere 2 to “breathe” in response to the daily and seasonal temperature variations. Just as mothers gave us our first breath, the breathing of Mother Earth sustains and nurtures us. Join us in celebrating mothers, the union of science and the arts, and the University of Arizona’s unique research facility at Biosphere 2.



## Breath of the Soul

Hayley Meier, choreographer/dancer

Jackie Glazier, clarinet

Devin Bayly, interactive visual artist

## Children of the Stars

Georgios Cherouvim, visual artist

## BreathScape (world premiere)

sopranos:

Yunah Lee, Bethany Jargstorf, Min Liu, Aysen Milliogullari,  
Abigail Juganaru, Yue Huang, MyeongJu Kang, Chunghee Lee  
Yuanyuan (Kay) He, synthesizer

Director/Composer: Yuanyuan (Kay) He, Astronomer: Chris Impey, Human Computer Interaction: Winslow Burleson  
Sensor Technology: Gustavo Almeida, Stage Technology/Lighting Design: Carson Scott, Narrative: Al Maria Paoli

**This event is supported by UA Sensor Lab Seed Grant**  
**Special Thanks: Biosphere 2 and UA School of Theatre, Film & Television**

[www.StellarScape.org](http://www.StellarScape.org)

## Plan Your Visit

Phone: (520) 621-4800 (press 0 to talk to admissions agent)

Email: [bio2-info@arizona.edu](mailto:bio2-info@arizona.edu)

Address: Biosphere 2 32540 S Biosphere Road, Oracle, AZ 85623

Website: <https://biosphere2.org>

<https://www.stellarscape.org/breathscape.html>

A free self-guided tour is included in your ticket for BreathScape, please download your ticket and the Biosphere 2 Experience App before you get here. Due to our remote location, reception is spotty. Please bring water and wear comfortable shoes. We recommend you use bathroom at the front desk lobby, because we do not have restrooms at the South Lung.

<https://biosphere2.org/visit/visit-biosphere-2/self-guided-tour>

While much of the Biosphere 2 is wheelchair accessible, the south lung is not accessible due to the presence of stairs and strong air pressure release at the entrance. If you have any questions, please email us at [bio2-info@arizona.edu](mailto:bio2-info@arizona.edu) or call our admissions team at 520-621-4800.

Due to Biosphere 2's remote location it may be difficult to schedule a departing ride when using a ride sharing service. We recommend that you make return transportation arrangements prior to arriving at Biosphere 2.

Due to the uprising cases of COVID-19, mask is required for all the audiences in the South Lung during the performance.

## Photos/Videos

Feel free to take photos/videos during the performance. We would love to ask you to help us spread the word of our project and our mission. Please tag us if you post photos/videos of your visit on social media.

**#StellarScape #BreathScape @biosphere2 @uarizonaarts**



## Parking and Meeting Point

Please park at the visitor parking area and our meeting point is in the lobby of the front desk.

After your arrival, our student assistants will help you to check in for the event.

Please plan on arriving at least 15 mins before your ticket time.

Due to strong air pressure release at the entrance of the South Lung, we need to make sure the lung is not deflate too much while the audiences entering the venue. We will invite all the audiences enter the venue all at once.

Enjoy the concert!  
StellarScape Team